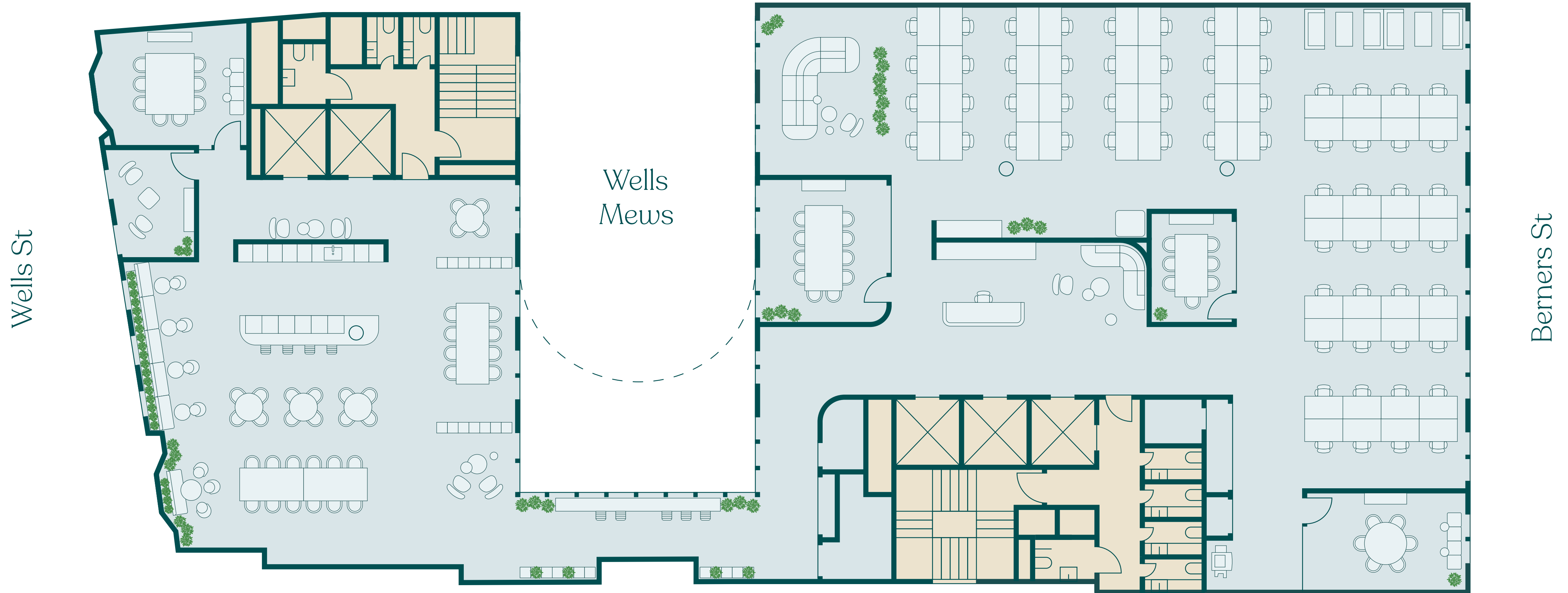




First floor plan

7,427 sq ft

690 sq m



Office space
Core

Not to scale
Indicative only



Third floor plan

7,937 sq ft

737 sq m



- Office space
- Core

Not to scale
Indicative only



Professional Team

Funded and developed as a joint partnership
between Berners-Allsopp and Schrodgers Capital

EMRYS

Architects

CBRE

Development Managers

elliottwood

Structural Engineer

blackburn&co.

Project Manager



MEPEngineer

Rolfe Judd

Planning Consultants

RX
LONDON

Hannah Buxton

020 7096 7050
07976 747 569
hannah.buxton@rx.london

Paul Smith

020 7096 7050
07711 468 891
paul.smith@rx.london

Catherine Lloyd

020 7096 7050
07795 445 833
catherine.lloyd@rx.london

BLUEBOOK

Joe Fuller

020 7167 6401
07803 937 733
joe@bluebooklondon.co.uk

Whitney Bowrin

020 7167 6405
07841 779 883
whitney@bluebooklondon.co.uk

Isobel Ewart

020 7167 6403
07714 491 025
isobel@bluebooklondon.co.uk

A development by

Schrodgers
capital

BERNERS – ALLSOPP

www.berniersandwells.com

Misrepresentation Act 1967. RX London, Bluebook and their clients give notice that: RX London and Bluebook for themselves and the vendor of this property give notice that these particulars do not form, or form part of, any offer or contract. They are intended to give fair description of the property and whilst every effort has been made to ensure their accuracy this cannot be guaranteed. Any intending purchaser must therefore satisfy themselves by inspection or otherwise. Neither RX London and Bluebook nor any of its employees has any authority to make or give any further representations or warranty whatsoever in relation to this property. All prices and rents quoted are net of VAT. July 2025